



1300 004 253

[www.ozzybackyards.com.au](http://www.ozzybackyards.com.au)  
[sales@ozzybackyards.com.au](mailto:sales@ozzybackyards.com.au)

## Showroom

8A/ 40-44 Wellington Road  
 South Granville NSW 2142



OZZY BACKYARDS  
 PERGOLAS & MORE

PERGOLAS | LOUVRES | RETRACTABLE AWNINGS | ELECTRIC BLINDS

1300 004 253

[WWW.OZZYBACKYARDS.COM.AU](http://WWW.OZZYBACKYARDS.COM.AU)





# Ozzy Backyards

Dedicated to the outdoors . Quality guaranteed

We integrate technology with the art of outdoor living, understanding your vision and lifestyle needs. With a craftsman's heart, we highlight the beauty in every detail, pouring expertise and passion into every creation.

1.



## Company Profile

Ozzy Backyards was founded with a vision to revolutionise the outdoor living industry by delivering superior quality products that exceed the market standards . With over 15 years of experience in the construction sector, our directors recognised a gap in the market - existing suppliers failed to meet the high standards of quality and durability that home owners deserve. In response, we established Ozzy Backyards to provide premium outdoor solutions that blend innovation, functionality, and elegance.

### Our Expertise

At Ozzy Backyards, we specialise in designing and supplying high-quality pergolas with automatic louvred roofs and motorised outdoor blinds, ensuring comfort, protection and aesthetic appeal for any outdoor space. In addition to our signature Louvered Pergola solutions, we also offer expert design and installation services for Sunrooms, Alfresco kitchens, Outdoor Furniture, and Concrete & Composite Decking. Our comprehensive range of services is tailored to enhance the functionality and beauty of your outdoor living area, creating a seamless and enjoyable environment for relaxation and entertainment.

### Our Services

We offer a range of premium outdoor solutions including Louvered Pergolas, Motorised Outdoor Blinds, Sunrooms, Alfresco kitchens, Custom Outdoor Structures and Concrete & Composite Decking, all designed to enhance residential and commercial spaces. Each of our solution is crafted to provide comfort, protection and aesthetic appeal, transforming your outdoor living area into a functional and beautiful retreat.

### Why choose Ozzy Backyards?

- Unmatched Quality - Built with highest grade materials for durability and longevity.
- Innovative Designs - Sleek, modern and tailored to enhance any outdoor area.
- Automation - Advance technology for effortless control.
- Customer-centric Approach - Solutions tailored to meet individual needs.
- Professionals - Backed by over 15 years in the construction industry

Transform your outdoor space with Ozzy backyards - where quality meets innovation

2.



# Product Catalogue

05

Aluminium  
Louvred Pergola



23

Intelligent  
Retractable Awnings



39

Waterproof  
Electric Blinds



Transform your outdoor space with elegance and functionality. Our premium pergolas and innovative shading solutions create perfect retreat, blending style, comfort and durability. Experience the beauty of nature while enjoying protection and control over your environment. Design your personal oasis and embrace outdoor living in its finest form.



# Louvred Pergolas

## Aluminium alloy construction

Aluminium is light weight, resistant to corrosion and rust, easy to clean and maintain and has a long service life.

## Simple in structure

The flip design allows for adjustable sunshade angles, providing high flexibility to adapt to different lighting conditions and offering a comfortable sunshade effect.

## Sleek in appearance

Modern style design, with a simple and elegant appearance, aesthetically pleasing and fashionable. It can seamlessly blend with various outdoor environments, enhancing the landscape effect.

## Rich in functionality

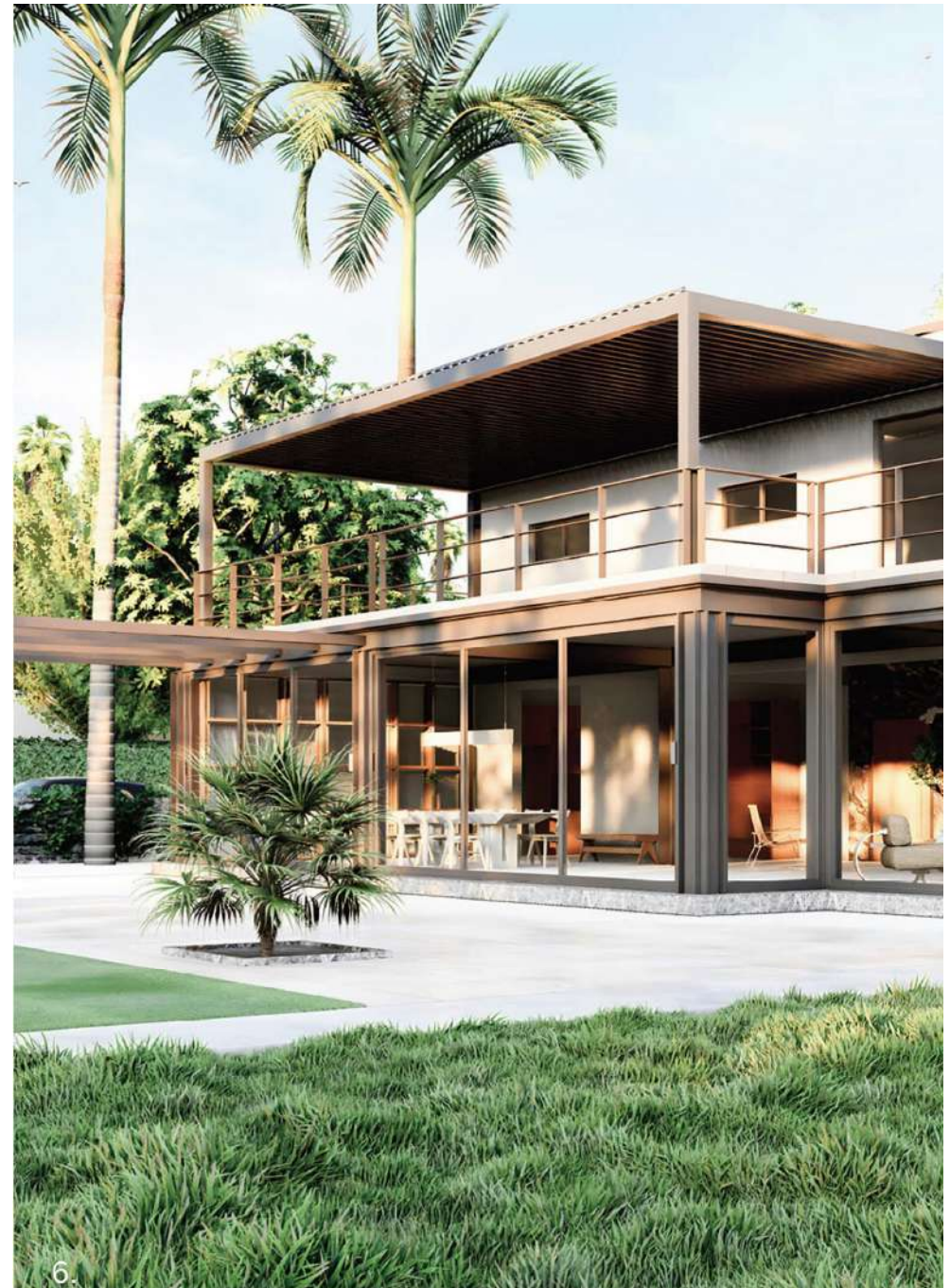
Provides sun protection, rain shelter, wind resistance, and other functionalities, making it suitable for outdoor relaxation, gatherings, yoga practice etc, catering to peoples' diverse needs.

## Convenient installation

It is easy to install and does not require complex construction technology. We can choose different sizes and styles according to actual needs.

## Applicable places

Outdoor spaces such as courtyards, gardens, parks, and leisure squares, providing people with comfortable resting and activity spaces.



# 6 Aluminium Alloy Louvred Pergola Advantages



1

## Wide Open Angle

The opening and closing angle of the blade reaches 100°. You can adjust the shading degree and air intake according to needs.



2

## Dual-groove waterproofing for louvers

The louvers are equipped with a side drainage system, which can be opened even after heavy rain. Rainwater will flow into the sink from the blades and will not cause dripping.



3

## Invisible Drainage

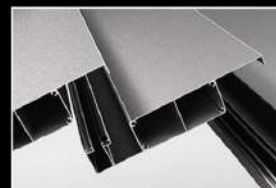
The invisible drainage system can allow rainwater to be directly discharged from the top surface of the louvers into the columns. Then it is discharged through underground drainage channels.



4

## Carrying capacity of 100kg

The columns and beams are larger and thicker, while the blades are wider and more robust. Constructed from high quality materials, the structure ensures greater stability and durability, withstanding snow loads of up to 100kg per square metre.



5

## Aluminium alloy and powder coating

Made from high-quality aluminium alloy, it offers exceptional resistance to strong winds, corrosion, and deformation. The surface features a high-density powder coating, ensuring long-lasting durability and colour retention for up to 20 years.



6

## L-Type support base plate reinforcement

The L-Type support bottom plate is designed to prevent issues such as looseness, rust, and corrosion, enhancing connection strength while improving the overall stability and safety of the structure.

8.



# 175

## Louvred Pergola

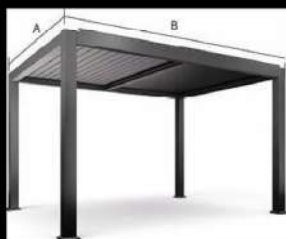
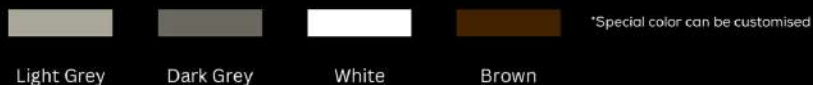


### Structural Diagram

- Connecting Rod
- Crossbeam over plate
- Metal block for column-beam connection
- Crossbeam
- Column
- Tubular motor
- Built-in water sink
- Waterproof sleeve for crossbeam LED strip
- Flip Flap
- Metal block for connecting column and bottom plate
- Column bottom plate



### Aluminium Color



The default height of the product is 2.7 meters

Custom size table		The stretching direction B												
		2000	2500	3000	3500	4000	4500	5000	5500	6000	6500			
The direction of the blade length A	2000	Standard customisation						Assembly customisation						
	2500													
	3000													
	3500													
	4000													
	4500													
	5000	Assembly customisation												
	5500													
	6000													

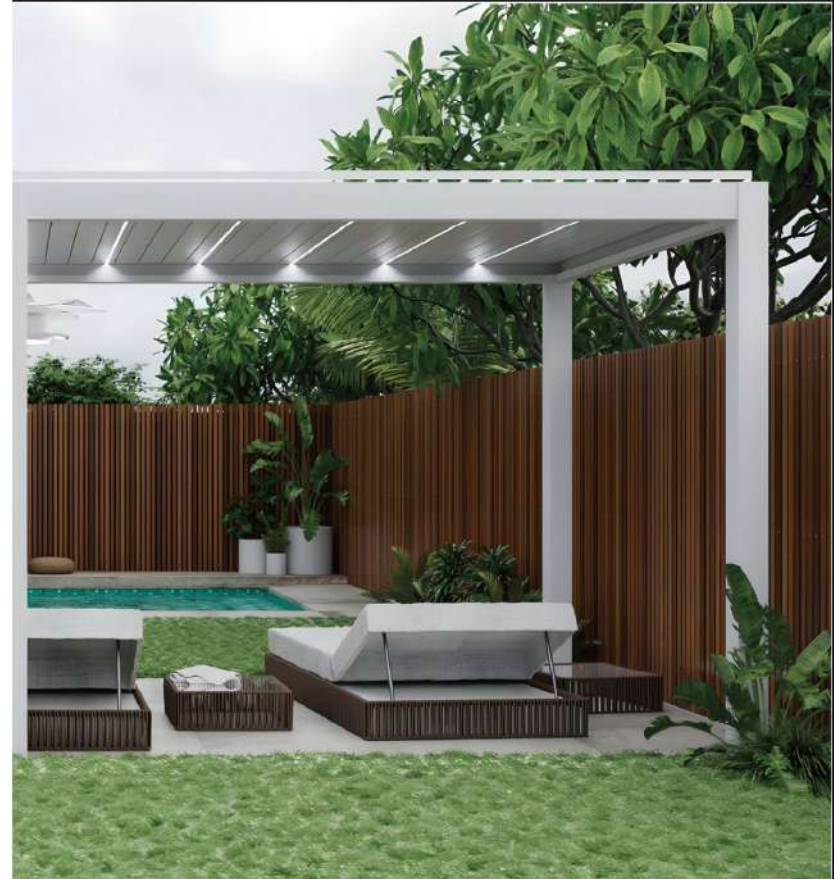


### Aluminium Profile





## Louvred Pergola



A Louvred Pergola is more than just a shaded outdoor area; it is a true reflection of your lifestyle and quality of living. Choosing an aluminium alloy pergola demonstrates a passion for high standards and enjoying life's finest moments.



# 175

## Louvred Pergola



Aluminium alloy construction



Rainproof and sunshade



Good ventilation



Fire resistant

With flip blade design, we can adjust the sunshade angle, which provides high flexibility and adapts to different lighting conditions. It offers a comfortable sunshade effect.



13.



In addition to being a decoration for gardens, a louvred pergola is also an ideal choice for commercial venues. It's unique design and high quality materials make it a preferred choice for restaurants, cafes, resorts and other places. Here you can spend time with your family and friends, experiencing a different kind of leisure and comfort.

14.



# 200

## Louvred Pergola



Aluminium alloy construction



Rainproof and sunshade



Good ventilation



Fire resistant

### Structural Diagram

- Connecting Rod
- Crossbeam over plate
- Metal block for column-beam connection
- Crossbeam
- Column
- Tubular motor
- Built-in water sink
- Waterproof sleeve for crossbeam LED strip
- Flip Flap
- Metal block for connecting column and bottom plate
- Column bottom plate



### Aluminium Color



Light Grey



Dark Grey



White



Brown

\*Special color can be customised



The default height of the product is 2.7 meters

Custom size table		The stretching direction B										
		2000	2500	3000	3500	4000	4500	5000	5500	6000	6500	7000
The deviation of the total length A	2000	Standard customisation						Assembly customisation				
	2500											
	3000											
	3500											
	4000											
	4500	Assembly customisation										
	5000											
	5500											
	6000											
	6500											
7000												

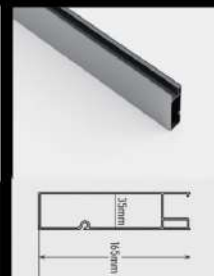
15.



## Aluminium Profile



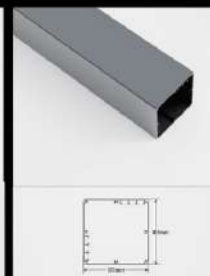
Name: Flap  
Thickness: 1.5 mm



Name: Crossbeam  
Thickness: 1.8 mm

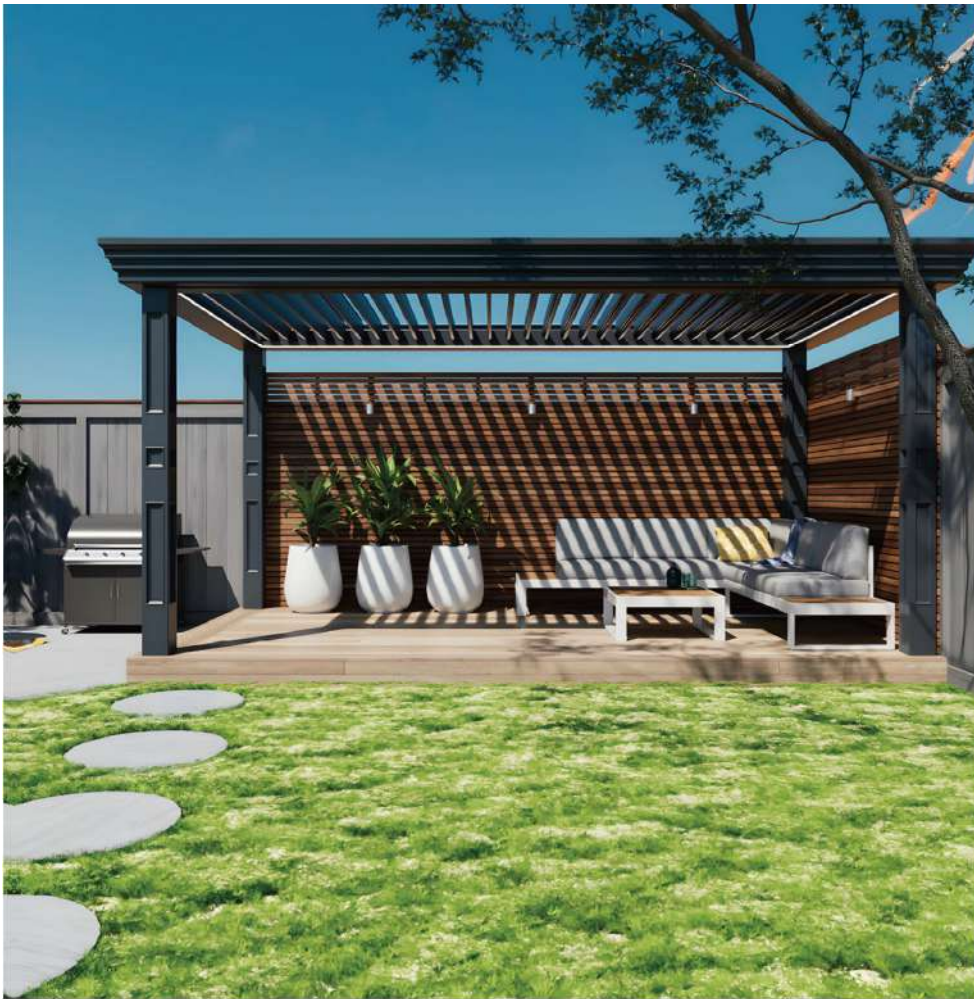


Name: Crossbeam sink  
Thickness: 1.3 mm



Name: Column  
Thickness: 2.2 mm

16.



# 200

## Louvred Pergola

17.

In addition to serving as a beautiful garden feature, a louvred pergola is also a fantastic option for commercial spaces. Its distinctive design and durable materials make it a popular choice for restaurants, cafes, resorts and similar establishments. It's the perfect spot to relax and enjoy quality time with family and friends, offering a unique blend of comfort and leisure.



Closed state



Open state

18.



# 250

## Louvred Pergola



Aluminium alloy construction



Rainproof and sunshade



Good ventilation



Fire resistant

### Structural Diagram

- Connecting Rod
- Crossbeam over plate
- Metal block for column-beam connection
- Crossbeam
- Column
- Tubular motor
- Built-in water sink
- Waterproof sleeve for crossbeam LED strip
- Flip Flap
- Metal block for connecting column and bottom plate
- Column bottom plate



### Aluminium Color



Light Grey



Dark Grey



White



Brown

\*Special color can be customised



The default height of the product is 2.7 meters

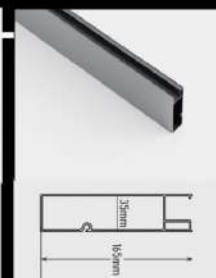
Custom size table		The stretching direction is											
		2000	2500	3000	3500	4000	4500	5000	5500	6000	6500	7000	7500
The direction of the Transmission	2000	Standard customisation						Assembly customisation					
	2500												
	3000												
	3500												
	4000												
	4500	Assembly customisation											
	5000												
	5500												
	6000												
	6500												
	7000												
	7500												
	8000												



### Aluminium Profile



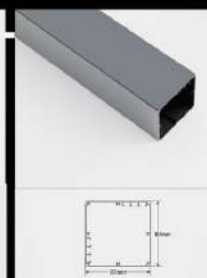
Name: Flap  
Thickness: 1.5 mm



Name: Crossbeam  
Thickness: 1.8 mm



Name: Crossbeam sink  
Thickness: 1.3 mm



Name: Column  
Thickness: 2.2 mm



## Louvred Pergola



The louvred pergola not only boasts a stunning design but also emphasises a comfortable user experience. It's spacious, airy layout ensures ample ventilation and a sense of comfort. During the day, it offers shade and cooling, while at night, it allows you to bask in the beauty of the starry sky and moonlight, fully immersing you in the wonders of nature, including seating, tables and more to suit your needs for any occasion.



# Intelligent Retractable Awnings

## Multifunctionality

In addition to its primary functions of providing sunshade and protection, it can also incorporate additional features such as intelligent lighting, further enhancing the overall user experience.

## Energy-saving and environmentally friendly

By applying energy-saving materials and intelligent control systems, it can effectively save energy and adhere to the concept of energy conservation and environmental protection.

## Excellent durability

Made with durable materials, which has a long service life and is not easily affected by external environmental factors.

## Security and reliability

With safety protection functions, such as wind and rain sensors that can sense bad weather, it can automatically put away to ensure safety of user.

## Design Aesthetics

The appearance is thoughtfully designed to be stylish and can seamlessly integrate with the architectural style, thereby enhancing the overall aesthetic appeal.

## Flexible Installations

With flexible installation methods, this product can be adapted to suit various outdoor spaces and meet different needs.



Aluminium alloy construction



Rainproof and sunshade



Intelligent remote control



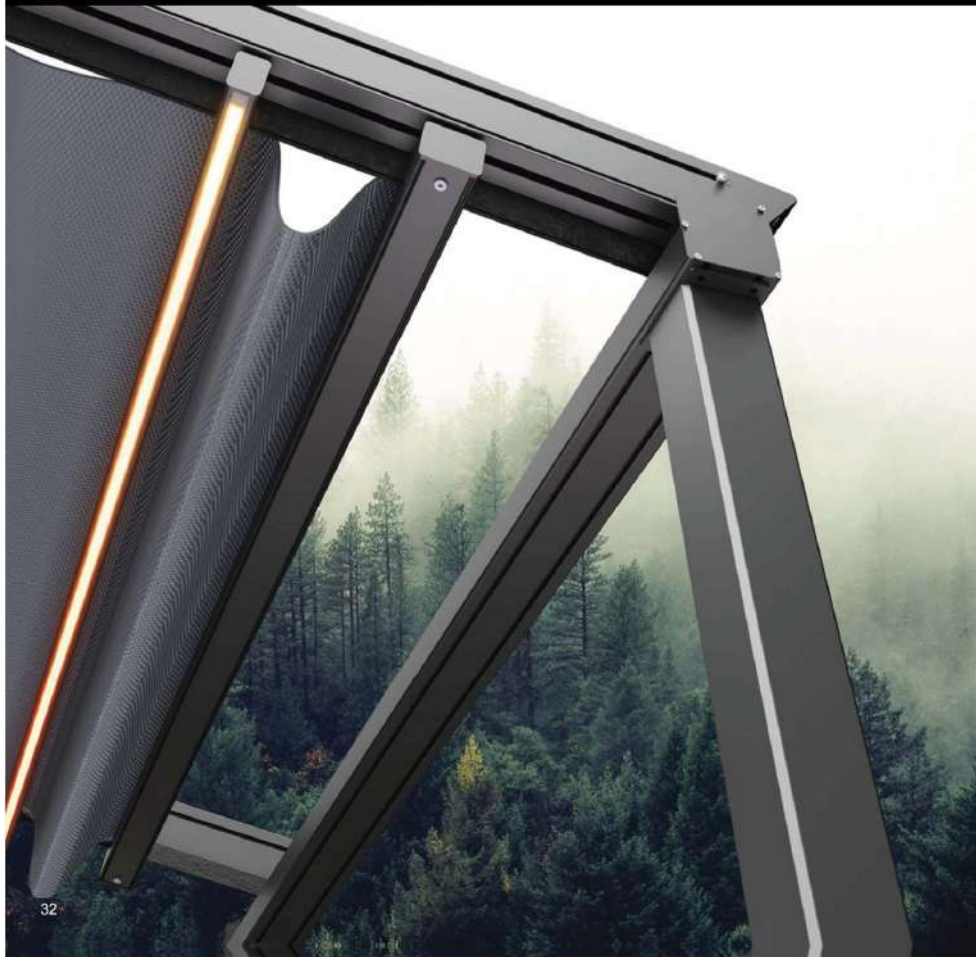
Motor driven



Built-in light strip



# 6 Intelligent Retractable Awnings Advantages



25.



## 1 Thickened Profiles

The incorporation of reinforced profiles in the design ensures the stability and durability of the product.



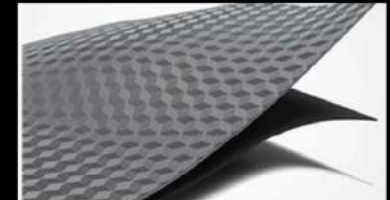
## 2 Wireless Remote Control

Effortlessly operate the opening and closing of the screen by remote control, facilitating a seamless experience.



## 3 Shading and heat insulation

With outstanding sun-shielding and heat-insulating capabilities, it efficiently blocks intense sunlight and heat, creating a comfortable and cool environment for the users.



## 4 3D curtain

Constructed from outdoor-specific 3D fabric, the product offers exceptional waterproof properties and enhanced stain resistance. The advanced colour-locking technique ensures vibrant, long-lasting colours that resist fading over time.



## 5 Water conduction design

The gutter features a G-shaped design structure to guide rainwater flow smoothly without causing splashing as it travels down the gutter.



## 6 Waterproof and rainproof

With outstanding rain and water resistance, the product effectively prevents rainwater seepage by utilising high-quality waterproof materials and precision craftsmanship.

26.



## Installation



Column-supported (single set)



Column-supported (double set)



Rod-supported



Wall-supported (single set)



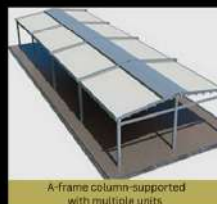
Wall-supported (double set)



Wall-embedded



A-frame column-supported



A-frame column-supported  
with multiple units



Steel structure bracket lifting



# 110



## Intelligent Retractable Awning

### Structural Diagram

- Motor
- Transmission rod
- Water stop board
- Sink
- Mop handle
- Guide rail
- Pulley
- Column
- Column base
- Synchronous belt
- Side cover
- Saddle



### Curtain fabric

\*Special color can be customised



#### Size instruction

Width	Straight-line distance between the outer sides of two tracks		
Extended Length	The horizontal distance between the rear column and the front column, not equal to track length		
Front Height	Distance from the column base to the front track	Rear Height	Distance from the column base to the rear column
Net Height	Equal to the height of the front column, front height - net height - 282mm		

#### Product parameter

Color	Dark grey, white, brown, can be customised	Indirect horizontal bar	450-500mm
Material	Aluminium	Light strip	Silicone waterproof, 3000k brightness LED
Size	The minimum width of a single piece is 4.5 meter, can extend upto 6 meters	Rain resistance	Complete rain protection
Surface	High density powder coating, anodized surface treatment	Wind resistance	The maximum resistance to a level 7 gale-force wind, 50-60km/hr
Motor	3 years warranty	Fabric	Heavy-duty PVC

29.

## Aluminium Profile



Name: Track  
Material thickness: 1.5mm



Name: Sink  
Material thickness: 2.0mm



Name: Column  
Material thickness: 2.0mm



Name: : Big mop rod  
Material thickness: 1.5mm



Name: Small mop rod without light  
Material thickness: 1.4mm



Name: Small mop rod with light  
Material thickness: 1.4mm



Name: Transmission rod  
Material thickness: 1.5mm



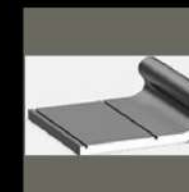
Name: Beam  
Material thickness: 2.0mm



Name: Water stop board  
Material thickness: 0.7mm



Name: Shading border  
Material thickness: 1.1mm



Name: Saddle

30.





110

Intelligent Retractable Awning

31.

The villa courtyard is an extension of your home, offering a peaceful retreat for the soul. To truly embrace a comfortable lifestyle in this space, thoughtful decoration is key. The intelligent retractable awning is a perfect addition to your garden, providing both style and practicality while transforming your outdoor experience. Enjoy a new level of comfort and functionality with this innovative feature in your courtyard.



Switch on



Switch off

32.



# 110

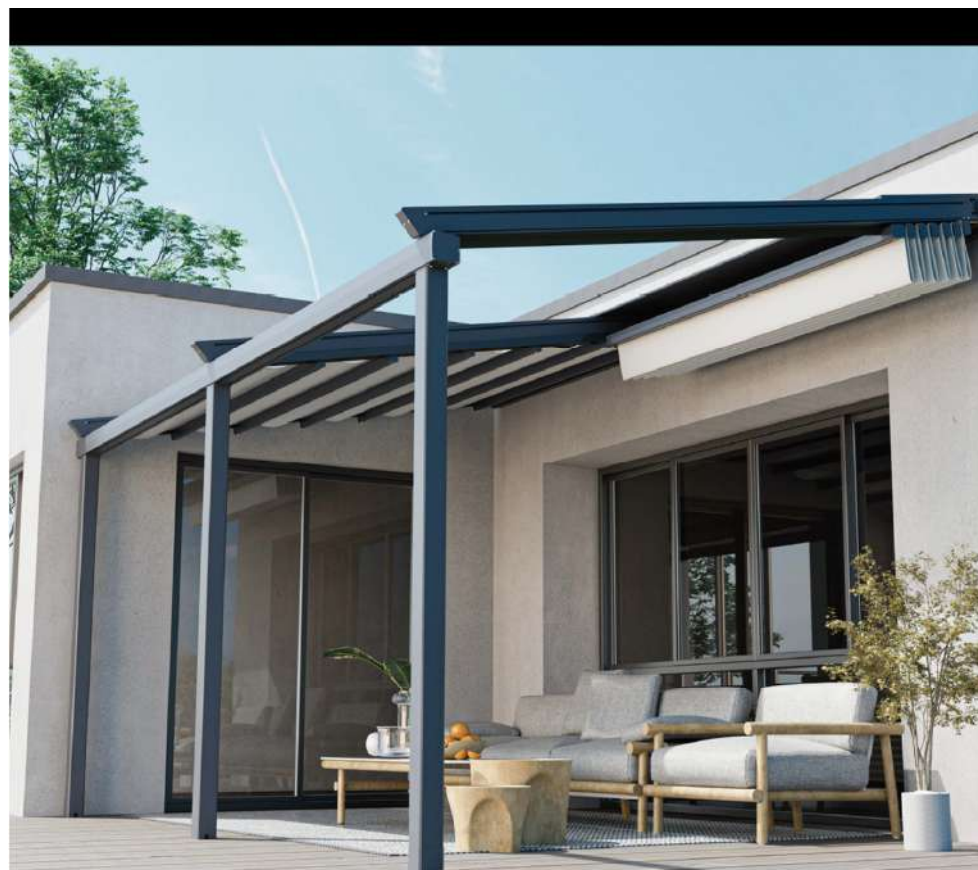


## Intelligent Retractable Awning

The intelligent retractable awning not only provides excellent shading and weatherproof functions, but can also be easily folded and adjusted according to weather conditions, allowing you to fully enjoy dining anytime. It's intelligent electric system makes operation more convenient, with one click control and ease.



33.



The innovative technology and design of the intelligent retractable awning transforms your garden into a stylish living space. Its electric system makes the awning easy to operate, offering one-click control to suit your needs. From sun protection to shielding against rain and wind, the intelligent retractable awning provides you with reliable protection, helping you enjoy every moment of peace and quiet in your garden.

34.



# 140



## Intelligent Retractable Awning

### Structural Diagram

- Motor
- Transmission rod
- Water stop board
- Sink
- Mop handle
- Guide rail
- Pulley
- Column
- Column base
- Synchronous belt
- Side cover
- Saddle



### Curtain fabric

\*Special color can be customised

Beige	Size instruction			
White	Width	Straight-line distance between the outer sides of two tracks	Distance between horizontal bars	Distance between two horizontal bars
Grey	Extended Length	The horizontal distance between the rear column and the front column, not equal to track length		
	Front Height	Distance from the column base to the front track	Rear Height	Distance from the column base to the rear column
	Net Height	Equal to the height of the front column, front height - net height - 282mm		

Product parameter			
Color	Dark grey, white, brown, can be customised	Indirect horizontal bar	450-500mm
Material	Aluminium	Light strip	Silicone waterproof, 3000k brightness LED
Size	The minimum width of a single piece is 5 meter, can extend upto 8 meters	Rain resistance	Complete rain protection
Surface	High density powder coating, anodized surface treatment	Wind resistance	The maximum resistance to a level 7 gale-force wind, 50-60km/hr
Motor	3 years warranty	Fabric	Heavy-duty PVC

35.

## Aluminium Profile



Name: Track  
Material thickness: 2mm



Name: Sink  
Material thickness: 2.5mm



Name: Column  
Material thickness: 2mm



Name: : Big mop rod  
Material thickness: 2mm



Name: Small mop rod without light  
Material thickness: 1.4mm



Name: Small mop rod with light  
Material thickness: 1.4mm



Name: Transmission rod  
Material thickness: 1.5mm



Name: Beam  
Material thickness: 2.0mm



Name: Water stop board  
Material thickness: 0.7mm



Name: Shading border  
Material thickness: 1.1mm



Name: Saddle

36.

# 140



## Intelligent Retractable Awning

The folding awning offers superior shading and rain protection while seamlessly adapting to changing weather conditions. Designed for convenience, it can be easily folded and adjusted to create the perfect outdoor environment, ensuring year-round comfort for dining and relaxation. Its advanced electric system allows for effortless operation with a single touch, providing ultimate ease and control.



The innovative technology and intelligent design of the electric folding awning transforms your outdoor space into a stylish and functional living area. Its advanced electric system ensures effortless operation with one-touch control, allowing you to seamlessly adjust for sun, rain, or wind protection. Providing reliable shelter and comfort, the folding awning enhances your outdoor experience, creating a serene environment where you can relax and enjoy every moment in peace and quiet.



37.

38.



# Weatherproof Electric Blinds

## Enhanced Wind Resistance

The windproof electric blinds are engineered with high-quality materials and a robust structural design, offering exceptional resistance to strong winds for enhanced durability and protection.

## Optimised Shading Performance

Serving as an effective sunshade, the electric blinds reduce indoor temperature, minimise exposure to ultraviolet radiation, and enhance thermal comfort. Additionally, they contribute to energy efficiency by lowering air-conditioning consumption.

## User-Friendly Operation

Designed for convenience, the electric blinds feature an intuitive control system that can be operated manually or electronically. The space-efficient design ensures seamless integration without occupying additional room.

## Advanced Security & Reliability

Equipped with intelligent safety features, such as wind and rain sensors, the electric blind can detect adverse weather conditions and automatically retract to safeguard the structure.

## Aesthetic Versatility

Available in a variety of colours and styles, the electric blinds can be customised to meet specific design preferences. The high-gloss finish enhances the overall architectural harmony of the building.

## Enhanced Privacy Protection

The electric blinds provide superior privacy by preventing visibility from outside, ensuring a more secure and secluded living or working environment.





# 6 Weatherproof Electric Blinds Advantages



41.



## 1 Electric remote control

The electric blinds can be effortlessly operated via a remote control, ensuring seamless opening and closing with ease. Additionally, it offers remote access through a mobile app, allowing you to control it from anywhere for maximum convenience and comfort.



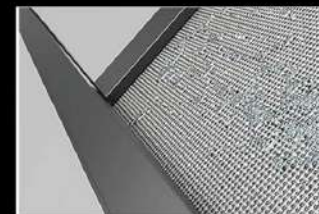
## 3 Sunshade and a panoramic view

Designed for optimal sun protection while preserving a clear, open view, this feature effectively blocks sunlight while maintaining excellent natural lighting.



## 5 Ultraviolet-proof

Designed to effectively block ultraviolet rays, it helps prevent UV damage to indoor furniture and belongings while also reduces heat build-up, creating a more comfortable living space.



## 2 Waterproof

Utilising advanced waterproof materials and innovative design, the electric blinds effectively prevent rainwater infiltration, ensuring superior protection against moisture.



## 4 Strong wind protection

Engineered for durability, it remains stable even in strong wind conditions, minimizing the risk of deformation or damage caused by wind forces.



## 6 Anti-mosquito and anti-insect

Designed to create a barrier between indoor and outdoor environments, it effectively prevents the intrusion of mosquitoes and other pests, ensuring a more comfortable and pest-free space—whether on an outdoor terrace or within an indoor living area.

42.



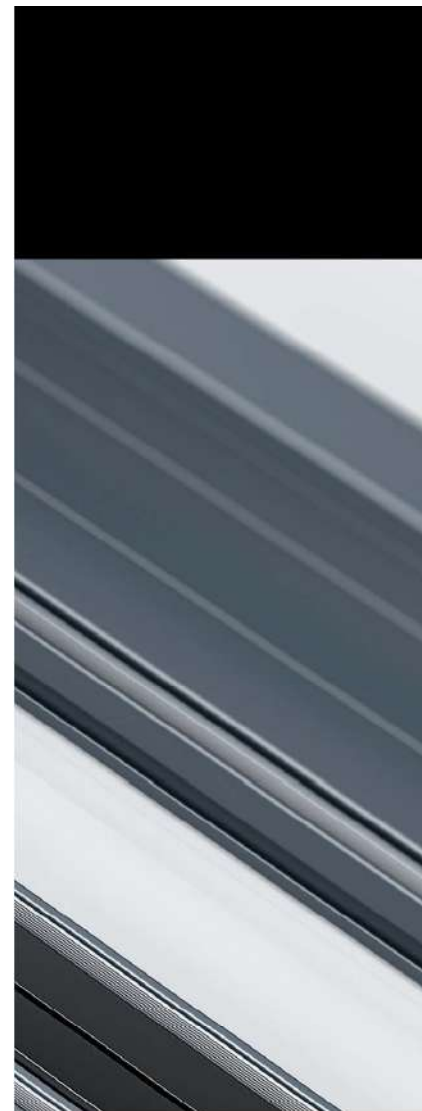


UPGRADED INNER TRACK

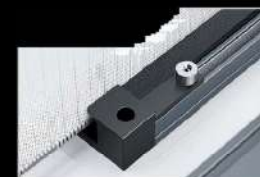
# 110/130

## Weatherproof Electric Blinds

43.



The newly upgraded stainless-steel shrapnel, combined with fabric held in a stable elastic support, guarantees optimal flatness and durability. This advanced design ensures the fabric maintains its integrity over time, resulting in an extended service life and enhanced overall performance.



The newly upgraded zipper guider ensures smooth insertion of the zipper into the plastic track, effectively preventing any risk of derailment and enhancing the overall functionality and reliability of the system.



The Aluminium track is strategically installed outside the plastic track to provide structural support, preventing any bending along the length and distortion across the width of the plastic track. This design further safeguards against zipper derailment, ensuring enhanced stability and long-term performance.

44.

# 110/130



## Weatherproof Electric Blinds

### Structural Diagram

- Back cover
- Front cover
- End cap
- Tubular motor
- Fabric tub
- Left track
- Right track
- Curtain
- Down rod
- Balancing weight
- Anti-collision rubber strip
- Stainless steel shrapnel



### Aluminium Color



Dark Grey

White

Brown

\*Special color can be customised



### Size instruction

Size	110 type maximum height: 4.5 meters, maximum width: 4.5 meters, minimum narrow distance: 0.7 meter 130 type maximum height: 6 meters, maximum width: 7 meters, minimum narrow distance: 0.7 meter		
Front Height	Single frequency remote control / Dual frequency remote control / Multi-frequency remote control	Surface	Pure resin outdoor material / high-density powder spraying
Material	Aluminum + Stainless steel fittings	Motor	<40W 100N Motor >40W 300N Motor

45.

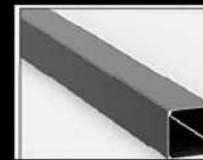
### Fabric Pattern



### HD PRINTING

We offer the option to customise your blinds with high-definition printing, allowing you to choose any design you prefer. This personalised feature is available at a minimal additional cost, giving you the opportunity to add a unique touch to your space without significantly impacting your budget. Whether its a logo, artwork, or pattern, our HD printing ensures vibrant, detailed results that enhance the aesthetic of your blinds.

### Aluminium Profile



Name: 110 cover

Material thickness: 1.8mm



Name: 130 cover

Material thickness: 2.0mm



Name: Track

Material thickness: 1.3mm



Name: Down rod

Material thickness: 1.5mm



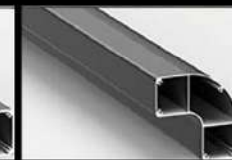
Name: Heavy down rod

Material thickness: 1.5mm



Name: Column

Material thickness: 2.0mm



Name: Angle Column

Material thickness: 1.5mm

46.



## Installation

### Forward Installation (outside the frame) Side Mount (inside the frame)

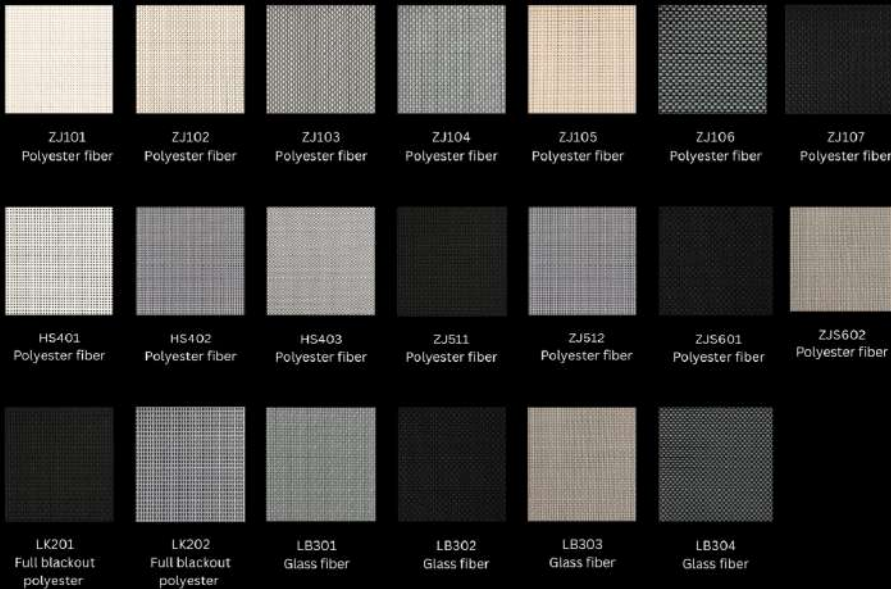
The electric blind is installed externally to the frame, with the track, fixing screws securely fastened from the side track-side. This installation method guarantees superior stability and durability, ensuring reliable performance and resistance against wind and other environmental factors.



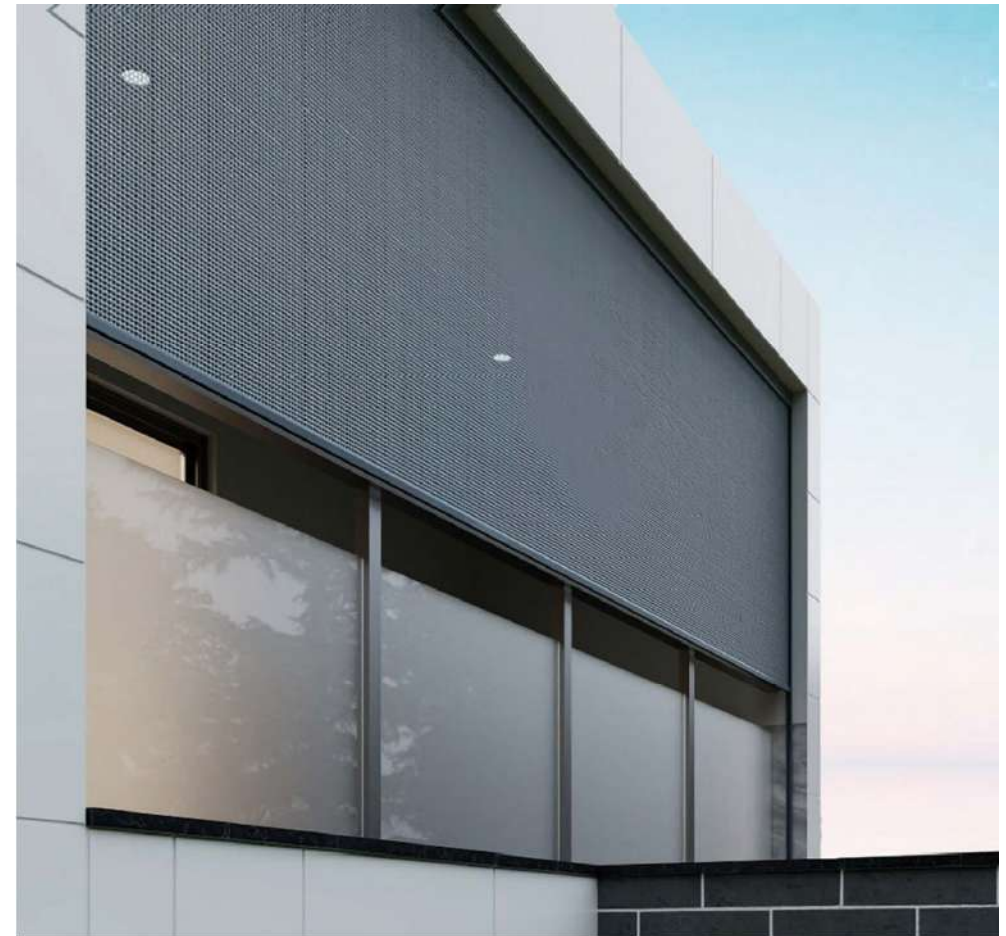
The windproof shutter is installed in the frame, and the windproof electric blind is installed within the frame, with the track, retaining screws securely fastened from the bottom. This installation method ensures a sleek, integrated appearance while providing enhanced stability and durability for reliable long-term performance.



## Fabric



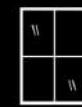
47.



## Installation Scenario



Pavilion



Floor to ceiling window



Balcony



Window



Partition

48.



# 110

## Weatherproof Electric Blinds

49.

The innovative design of our intelligent electric blinds provide effective sun shading. Allowing natural light to permeate your space while minimising harsh glare. This creates a more comfortable and productive environment, whether in a commercial or residential setting, enabling occupants to focus without distraction from the sun. The unique design offers both optimal shading and unobstructed scenic views. By blocking the sun, it preserves an open, transparent perspective, while still allowing fresh air to flow into the interior, enhancing the connection with the outdoors without compromising the beauty of the surrounding.



50.







# 130



## Weatherproof Electric Blinds

The unique design of our weatherproof electric blinds offers a dual function of providing effective shading while preserving unobstructed views. While efficiently blocking out the sun, they maintain an open, transparent perspective, allowing the breeze to flow into the pergola and enabling you to enjoy the beauty of the outdoors without compromise.



53.



The unique design of our weatherproof electric blinds makes them an effective solution for enhancing privacy. While providing optimal sun protection, they also ensure the privacy of your guests, allowing them to enjoy a secure and tranquil living experience without the concern of being observed, all while relaxing in a comfortable and protected environment.

54.



# Transform Your Outdoors with Ozzy Backyards

Your perfect outdoor space is just a step away. At Ozzy Backyards, we bring your vision to life with a range of premium outdoor solutions designed to enhance your home or business. Whether you're looking for a stylish louvred pergola, a custom alfresco kitchen, or durable motorised outdoor blinds, we have the expertise to create a space that's as functional as it is beautiful.



## Ready to take the next step ?

Get in touch with us today to start your journey towards transforming your outdoor living area. Our team is here to guide you through every step, from design to installation, ensuring your space becomes a true reflection of your lifestyle.



## Explore Our Full Range of Services & Products

Don't stop here! Discover our full range of services, including sunrooms, outdoor furniture, concrete and composite decking, and more. Browse through our website and the gallery of completed projects and get inspired by the possibilities for your own outdoor sanctuary.

## Contact Us Today

Sign up now or reach out to our team for a consultation. Let us help you create an outdoor space that offers comfort, beauty, and value for years to come.